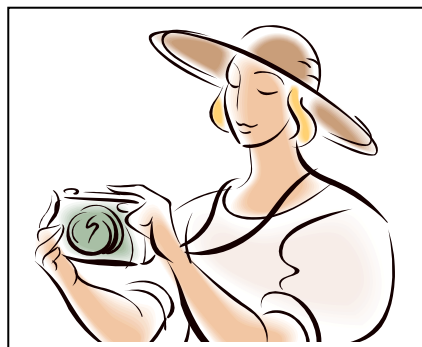


Summertime Photographic Walks (Cost - £6)

Leader & Tutor:-

Robin Eley-Jones



Each walk will start at approximately 10.30am and last about two to three hours, walking at a gentle pace, with frequent stops to take photographs. Printed joining details will be provided to all those who enrol. Open to all members (and friends as temporary members +£1) who would like to acquire a few tips for improving their photography.

Wednesday July 14th - MARBURY VILLAGE

A tiny but beautiful Cheshire village which has won the 'best kept village' award 7 or 8 times recently. Within a short walk there is a fine church and churchyard, a mere with a beautiful view back towards the hamlet. For those who wish to walk an extra mile, across a couple of fields, there is an option to include pictures of a canal with lock gates etc. **

Tuesday July 20th - LIVERPOOL

A new route from the ferry passing the Liver Buildings, St Nicholas's Churchyard, the Town Hall, William Brown Street and St Georges Hall and including a 'secret' arcade off Castle St.

Friday July 23rd - BURWARDSLEY

Starting at the 'Cheshire Workshops – Candle Factory' we stroll around this lovely Cheshire village ending at the Pheasant Inn. Returning to the car park we have an 'amusing' end! **

Thursday July 29th - THURASTON

From the village church we explore Thursaston Common and it's views over the Wirral and towards North Wales. **

Tuesday August 3rd - WILEY MOOR

From the famous Cheshire pub (a former lock-keepers home) we walk across a few fields to photograph a church in a most unusual setting; then back to sample some coffee or real ale, and take pictures of the boats going through the lock gates. **

Monday August 9th - PORT SUNLIGHT

One of the most popular walks arranged at a different time of year than previous trips to provide an opportunity to picture the rose beds and other summer floral scenery for those who have been before. as well as those who have not sampled the village delights before.

** These walks will be offered of a 'car share' basis (full joining instructions will be provided to those enrolling).

Further details if required from:

robineleyjones3@gmail.com 0151-652 7526